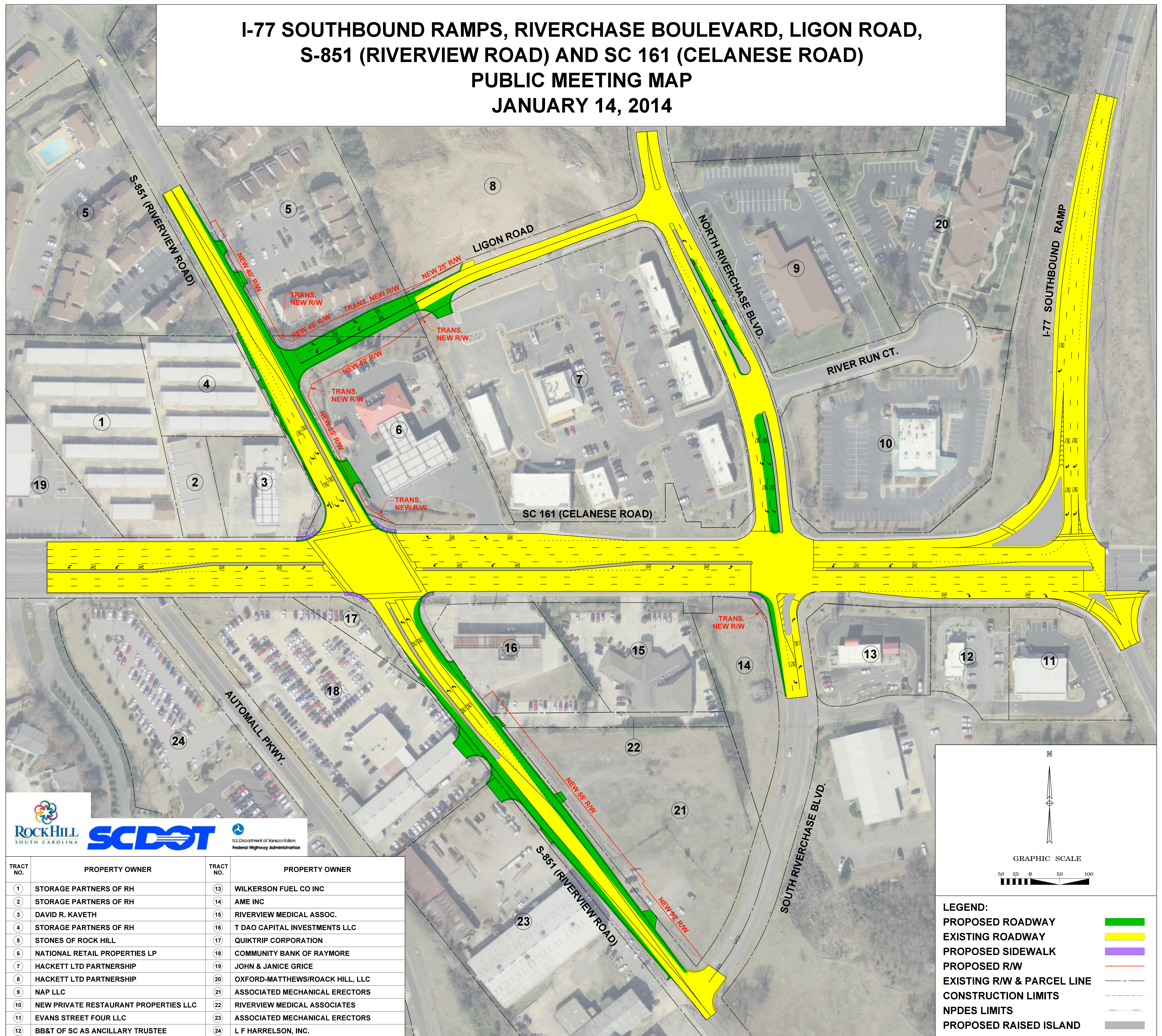
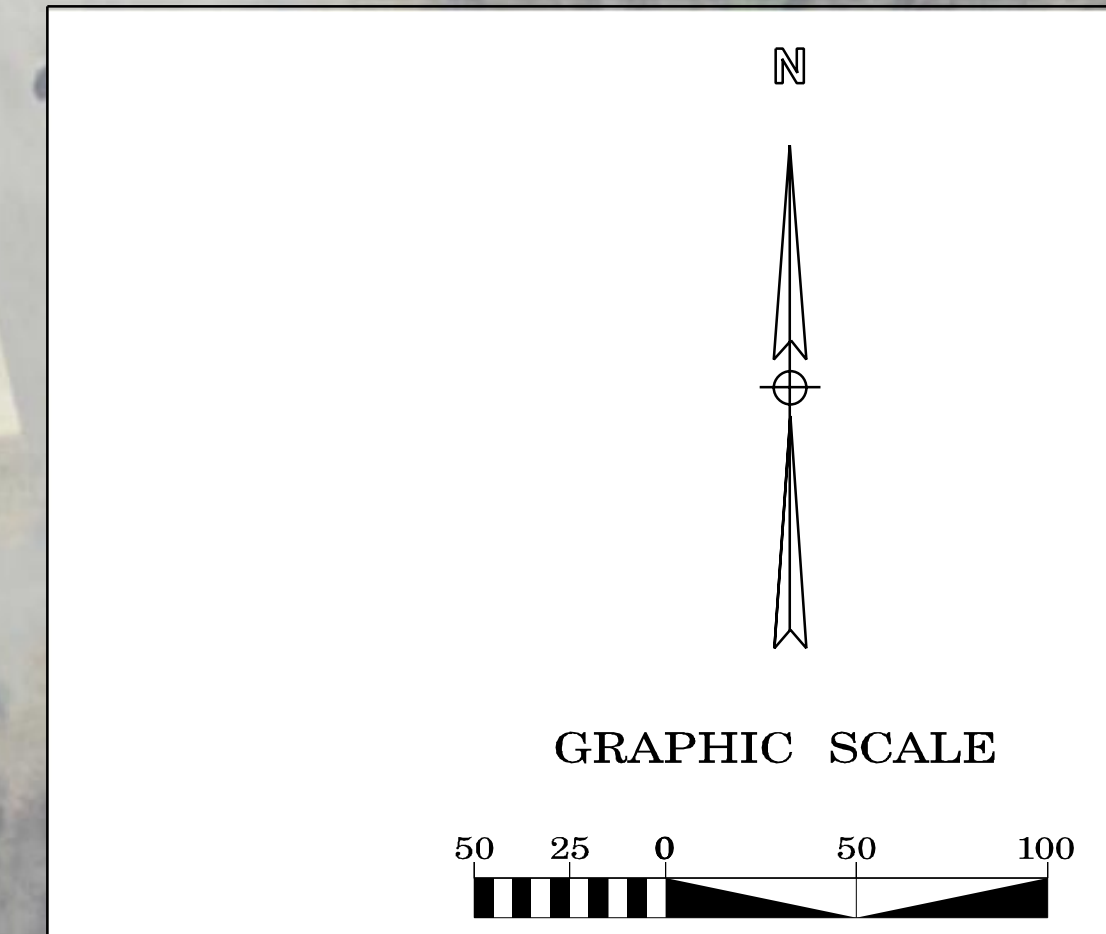


I-77 SOUTHBOUND RAMP, RIVERCHASE BOULEVARD, LIGON ROAD, S-851 (RIVERVIEW ROAD) AND SC 161 (CELANESE ROAD) PUBLIC MEETING MAP JANUARY 14, 2014



TRACT NO.	PROPERTY OWNER	TRACT NO.	PROPERTY OWNER
1	STORAGE PARTNERS OF RH	13	WILKERSON FUEL CO INC
2	STORAGE PARTNERS OF RH	14	AME INC
3	DAVID R. KAVETH	15	RIVERVIEW MEDICAL ASSOC.
4	STORAGE PARTNERS OF RH	16	T DAO CAPITAL INVESTMENTS LLC
5	STONES OF ROCK HILL	17	QUIKTRIP CORPORATION
6	NATIONAL RETAIL PROPERTIES LP	18	COMMUNITY BANK OF RAYMORE
7	HACKETT LTD PARTNERSHIP	19	JOHN & JANICE GRICE
8	HACKETT LTD PARTNERSHIP	20	OXFORD-MATTHEWS/ROACK HILL, LLC
9	NAP LLC	21	ASSOCIATED MECHANICAL ERECTORS
10	NEW PRIVATE RESTAURANT PROPERTIES LLC	22	RIVERVIEW MEDICAL ASSOCIATES
11	EVANS STREET FOUR LLC	23	ASSOCIATED MECHANICAL ERECTORS
12	BB&T OF SC AS ANCILLARY TRUSTEE	24	L F HARRELSON, INC.



LEGEND:

PROPOSED ROADWAY	
EXISTING ROADWAY	
PROPOSED SIDEWALK	
PROPOSED R/W	
EXISTING R/W & PARCEL LINE	
CONSTRUCTION LIMITS	
NPDES LIMITS	
PROPOSED RAISED ISLAND	